



*jordan* fishwick

WEST DIDSBURY  
Houseman Crescent





# Houseman Crescent, West Didsbury, M20 2JA

Guide Price £230,000

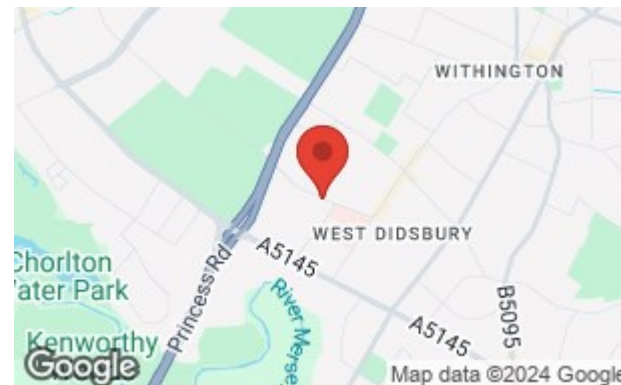


## The Property

A MOST IMPRESSIVE GARDEN APARTMENT WITH STYLISH LIVING SPACE THROUGHOUT, GENEROUS DECKED TERRACE AND A GREAT LOCATION IN WEST DIDSBURY. 585 sq ft. This particular property forms part of the popular Didsbury Gate development, which is an impressive conversion of a Victorian building by Messrs PJ Livesey, lying within beautifully landscaped gardens and grounds. The tastefully presented accommodation space includes a generous living room with high ceilings and French doors to the decked terrace, modern fitted kitchen with integrated appliances, double bedroom with fitted furniture and separate access to the terrace, contemporary and recently fitted shower room with white suite and chrome fittings and a good sized hallway with useful storage space off. In addition, there are well maintained communal grounds and allocated gated parking. \*No Onward Chain\*

## Directions

M20 2JA





- Impressive garden apartment
- Generous decked terrace
- Stylish living space
- Spacious living room
- Modern fitted kitchen
- Contemporary shower room
- Bedroom with fitted furniture
- Gated allocated parking
- Landscaped communal gardens
- Great location

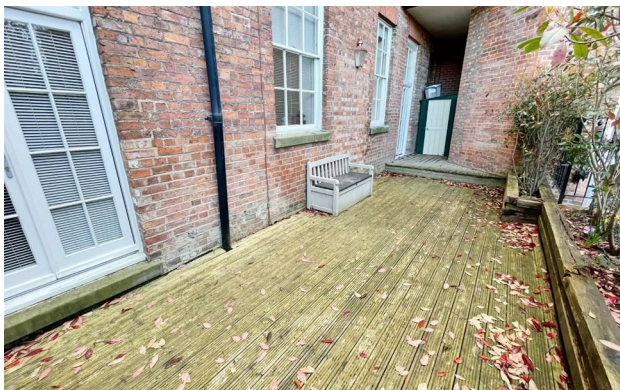
Postcode - M20 2JA

EPC Rating - C

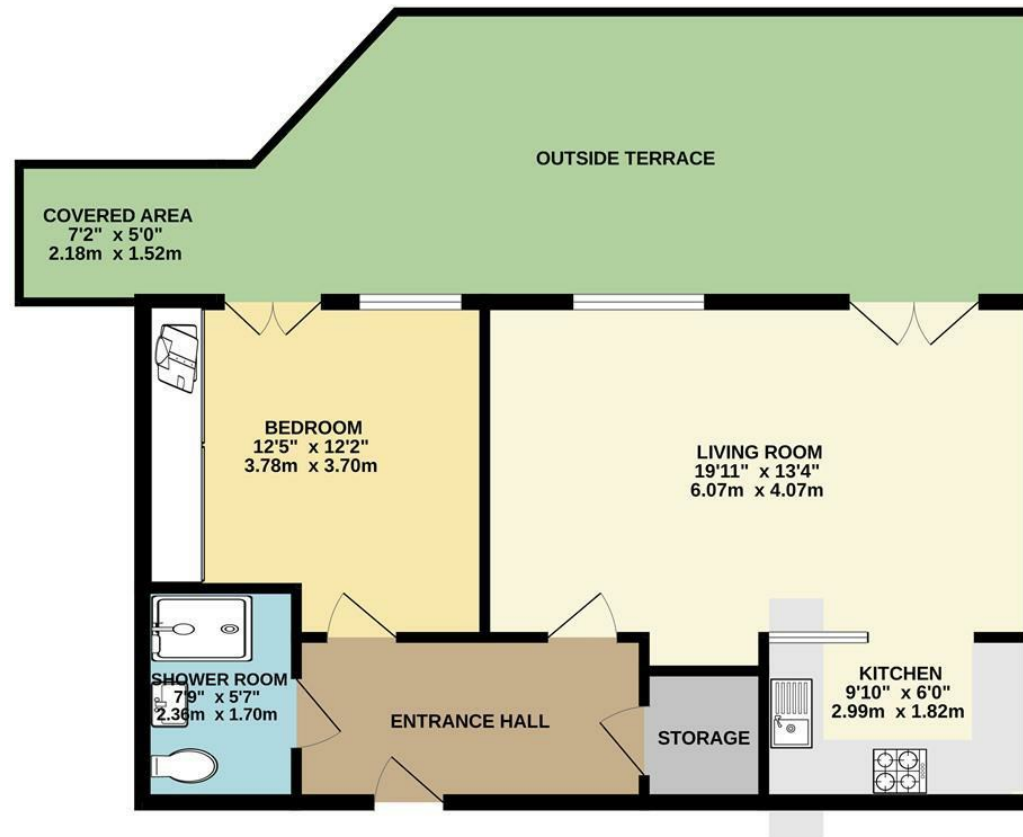
Floor Area - 585.00 sq ft

Local Authority - Manchester City Council

Council Tax - C



585 sq.ft. (54.4 sq.m.) approx.



TOTAL FLOOR AREA : 585 sq.ft. (54.4 sq.m.) approx.  
Measurements are approximate. Not to scale. Illustrative purposes only.  
Made with Metropix ©2024



These particulars are believed to be accurate but they are not guaranteed and do not form a contract. Neither Jordan Fishwick nor the vendor or lessor accept any responsibility in respect of these particulars, which are not intended to be statements or representations of fact and any intending purchaser or lessee must satisfy himself by inspection or otherwise as to the correctness of each of the statements contained in these particulars. Any floorplans on this brochure are for illustrative purposes only and are not necessarily to scale.

Offices also at: Wilmslow, Macclesfield, Hale, Sale, Chorlton, Glossop, Manchester & Salford

757-759 Wilmslow Road, Didsbury Village, Manchester

0161 445 4480

didsbury@jordanfishwick.co.uk  
www.jordanfishwick.co.uk